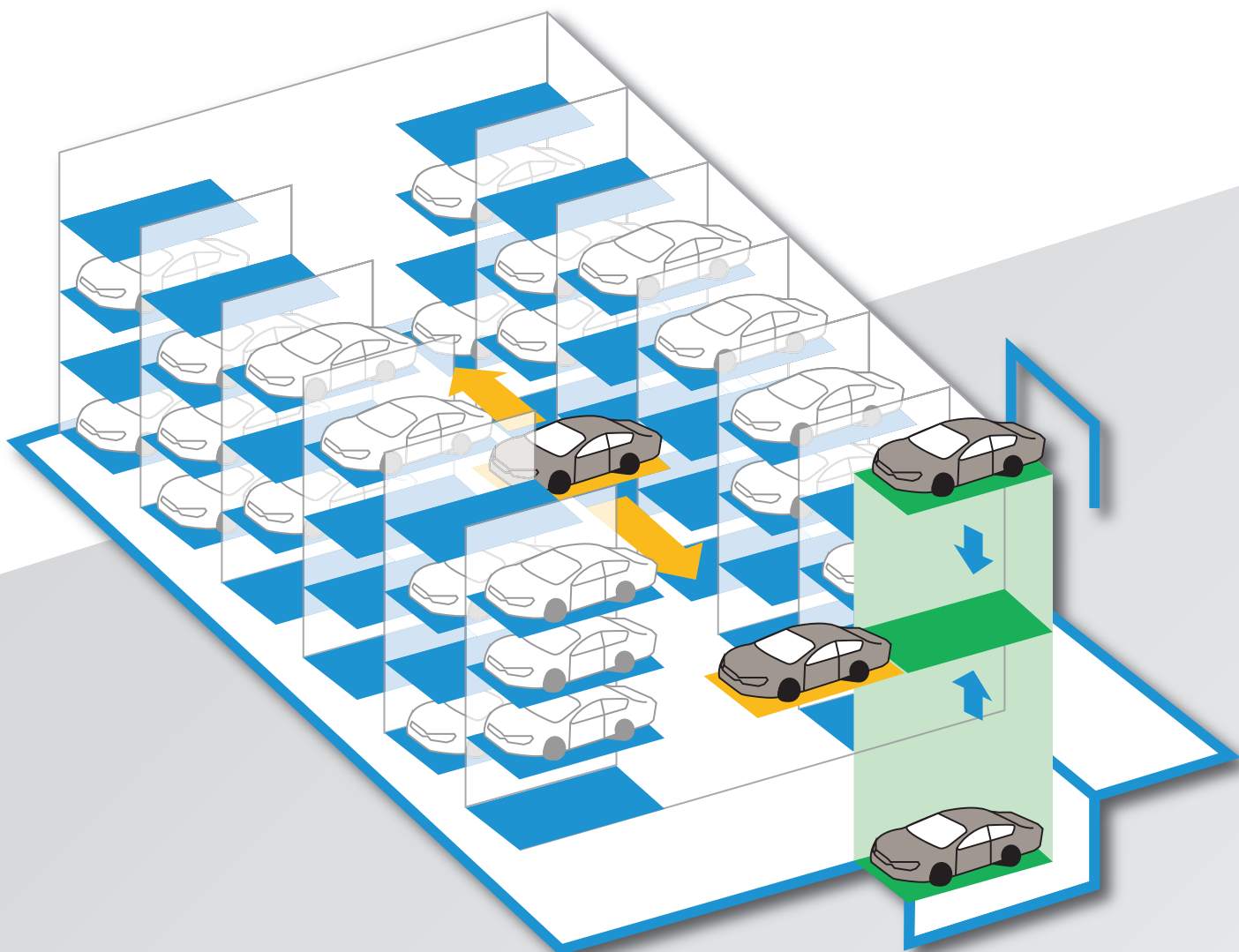




AUTOMATIC PARKING TECHNOLOGY

Making the **BEST** use of space



Automatic parking technology

In this ebook we will introduce automated parking technologies.

One of the most versatile technologies for newly planned parking facilities is the BEST PARKING SYSTEM, which can accommodate hundreds of cars.

The system is perfectly suited to underground garages for areas where space is at a premium – in the central parts of urbanised areas e.g. under parkland, near airports, shopping malls, and big administrative or residential centres.

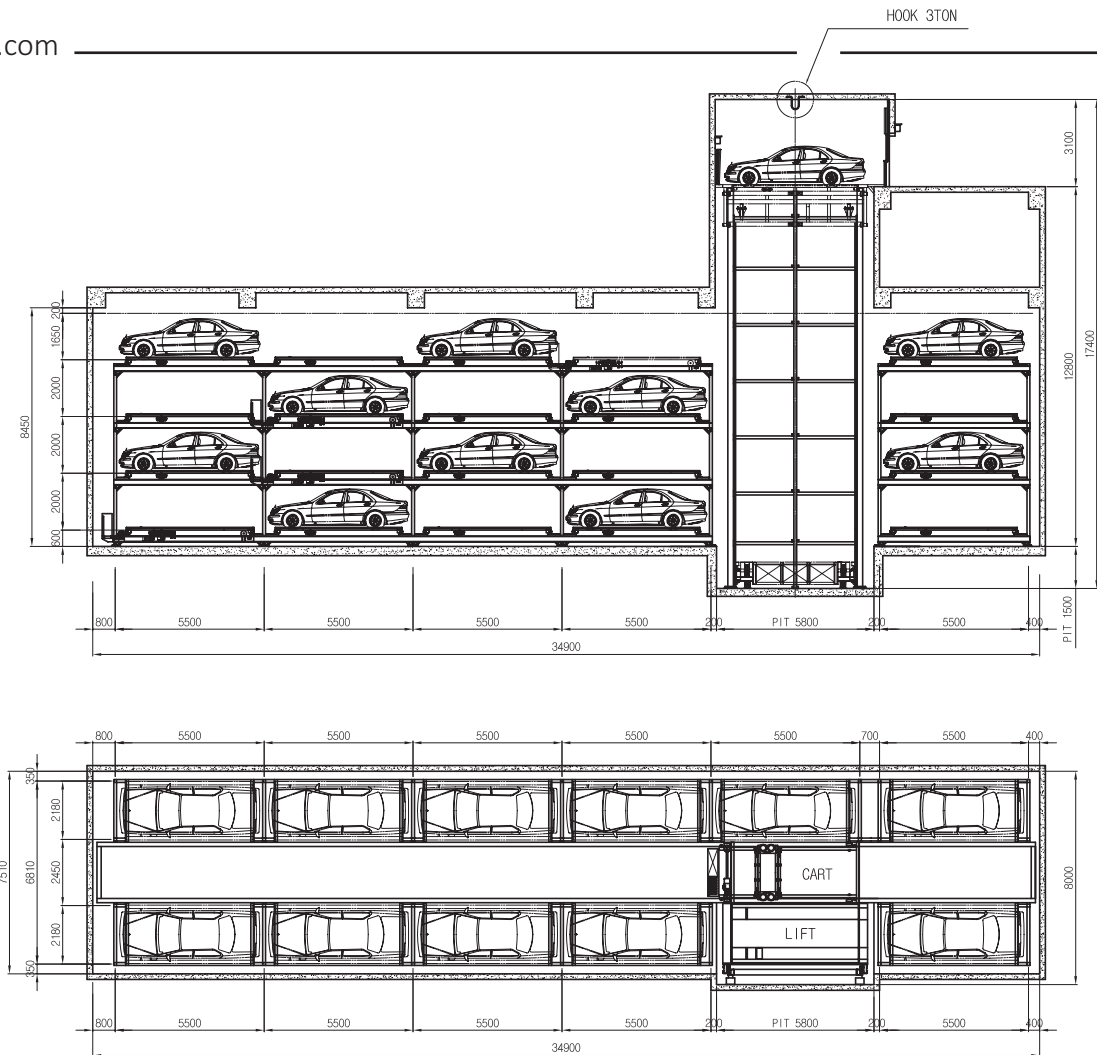


BEST parking system. Lengthwise sedan type. Height 7 stories

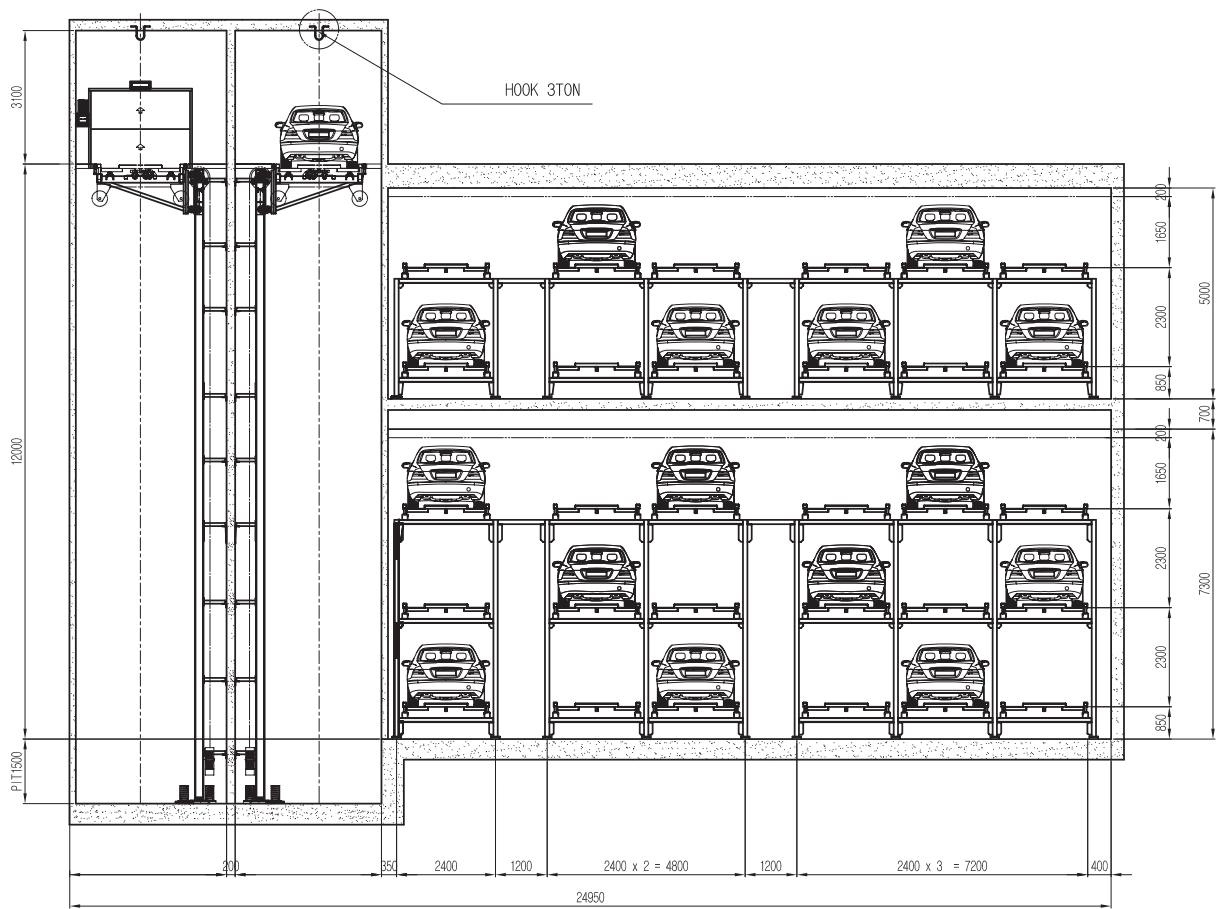
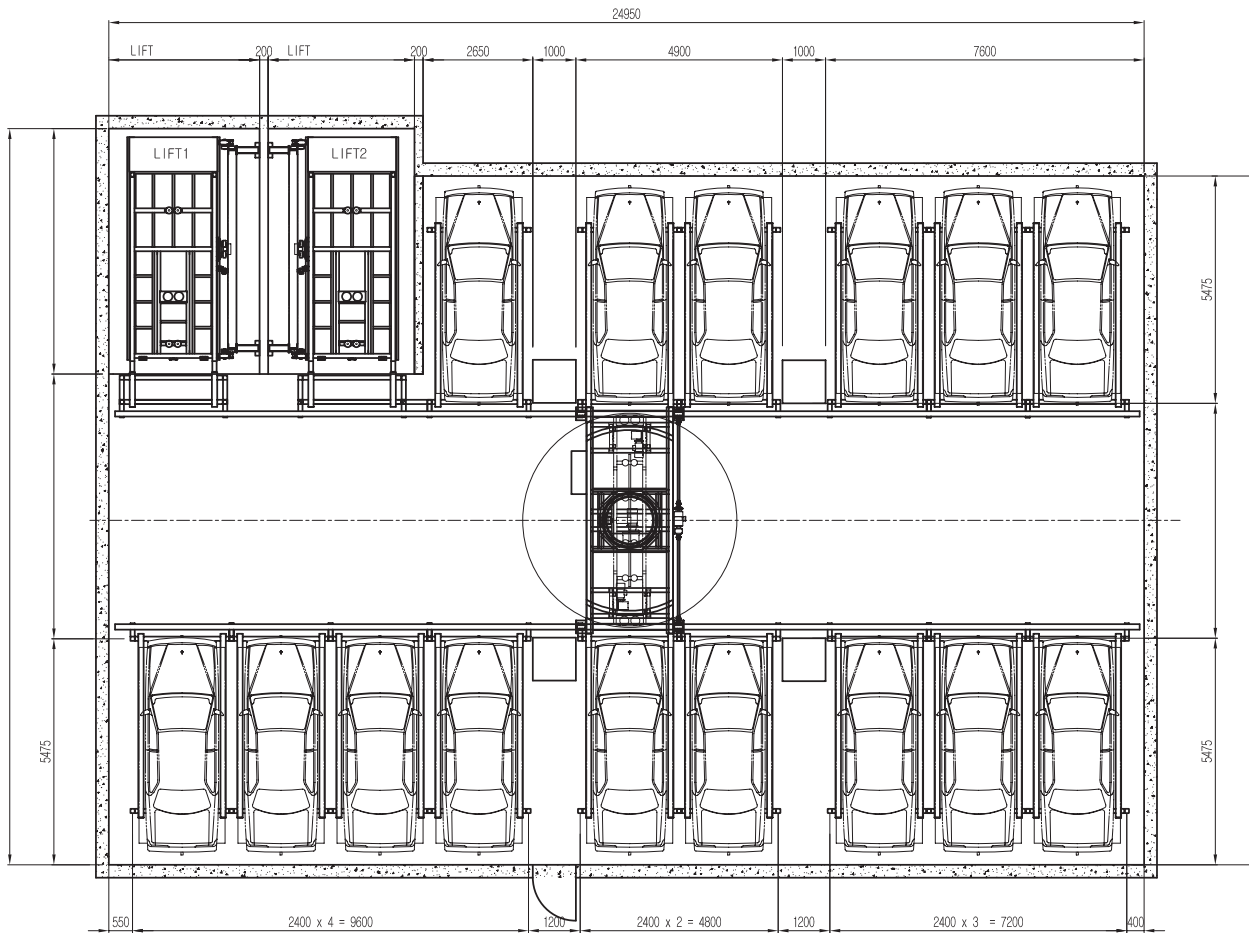
BEST PARKING

*Pallet type / Type DMF /
Much faster than the fastest!*

- This is the latest generation of parking facility, making it possible to park the maximum number of vehicles in the least amount of space – quickly and safely.
- The BEST system can be tailored to various sizes to accommodate tens of cars, or several hundred, depending on the number of lifts
- It is especially suited to large-scale parking lots, because of its huge modularity and great ability to utilise any kind of space
- The system uses lifts for the vertical movement and carts for the transverse movement. The cars are parked in steel framed hangars on the cages
- Equipped with turntables for better ergonomic and time saving operation (optional)
- Available for Sedan and SUV vehicles up to 3000kg
- The system has the certificate of confirmation for the European Union



Standard details	
Capacity	20-600 cars
Dimensions of the vehicle	Sedan 5200 (L) x 2150 (W) x 1600 (H) SUV 5200 (L) x 2150 (W) x 1900 (H)
Weight of the vehicle	Sedan 2150 kg SUV 3000 kg
Lifting	Hoisting motor – 22 kW geared brake motor
	Hoisting speed – 45≈60 m/min (in proportion to lifting distance)
	Horizontal movement motor – 1.5 kW
	Horizontal moving speed – 45 m/min
Cart	Running motor – 1.5 kW
	Running speed – 80≈120 m/min (in proportion to travelling distance)
	Horizontal movement motor – 1.5 kW
	Horizontal moving speed – 45 m/min
	Picking motor – 0.4 kW
	Type of picking – rack & pinion
Turn table rotation	Motor – 3 kW
	Speed – 3.5 rpm
Safety devices	<ul style="list-style-type: none"> ■ induction and guidance lights at the entrance ■ equipment detecting the right place of the automobiles at the entrance ■ fall preventing equipment ■ system detecting cutting of the hoisting wire ■ and others
Power	AC 380V, three phase and four lines way, 50 Hz





IDOPS, cooperative

Hýrošova 3

811 04 Bratislava

Slovak Republic

tel: +421 2 2129 9101

fax: +421 2 2129 9105

e-mail: parking@idops.com

www.idops.com